



DATA SHEET

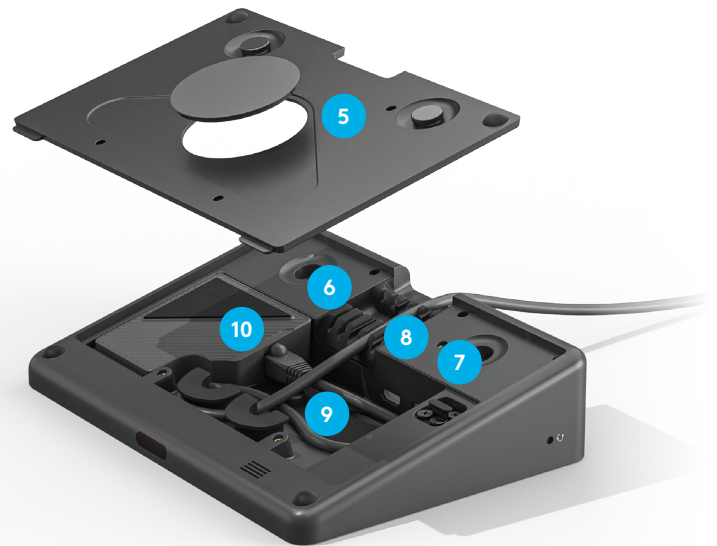
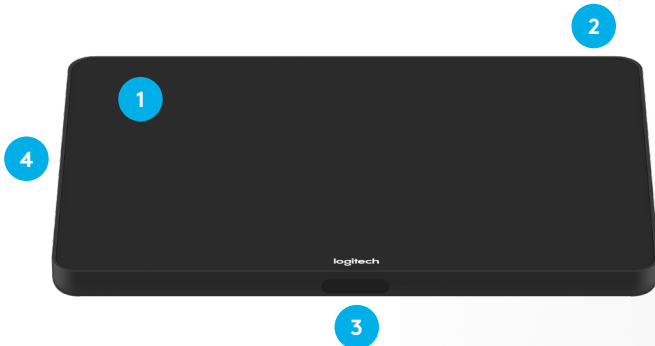
LOGITECH TAP

Deliver one-touch join, calendar integration, instant content sharing, and always-on readiness to meeting rooms. With a sleek design, silent operation, and motion sensor for always-on readiness, Tap brings ease and convenience to video collaboration.

MEETING ROOM TOUCH CONTROLLER FOR VIDEO CONFERENCING ROOM SOLUTIONS

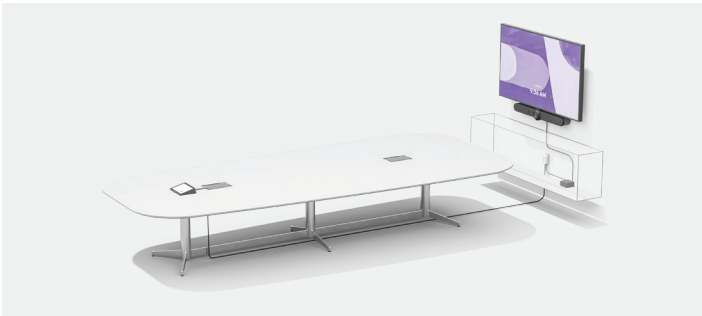
More than just a meeting room touch controller, Logitech Tap is what helps you achieve a consistent user experience across your entire deployment.

Boasting a crisp 10.1" touchscreen, low-profile enclosure, and multiple mounting accessories, Logitech Tap delivers a sleek appearance and convenient placement options that support a wide range of room sizes and layouts. And, with its HDMI input, content sharing is instant and effortless. Wireless content sharing is also available depending on your chosen video conferencing service.



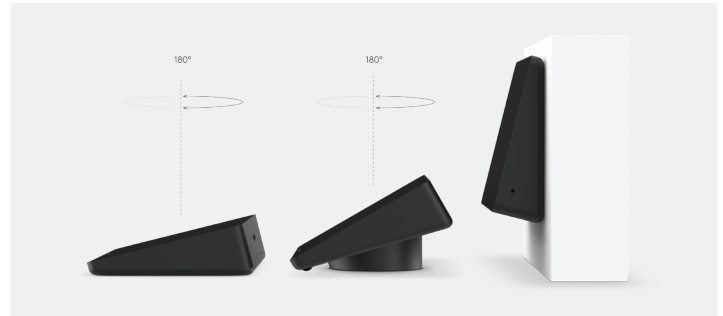
- 1 10.1" touch display:** Spacious and responsive touch screen resists fingerprints and glare for high legibility and easy operation.
- 2 Silent enclosure:** The sleek, fan-free design provides a comfortable 14° angle for easy reading while creating space for connections, cables, and retention mechanisms.
- 3 Always-on readiness:** Built-in motion sensor saves power when idle, and powers on when a person approaches.
- 4 Headphone jack:** Extends the host computer's wired audio capabilities to the tabletop, ideal for private conversations and for the hearing-impaired.
- 5 Dual cable exits:** A sturdy metal cover with removable bottom and rear exits keep cables tidy and secure.
- 6 Built-in cable retention:** To keep connections tight, Tap features a comprehensive strain relief and retention system, hidden entirely within its enclosure.
- 7 USB accessory port:** Connect an accessory such as a USB speakerphone.
- 8 HDMI input for content sharing:** Provides instant wired content sharing when used with Google Hangouts Meet, Microsoft Teams Rooms, and Zoom Rooms.
- 9 Anti-theft protection:** Keep Tap securely in place by connecting a security cable to one of Tap's two Kensington lock slots, one on the bottom and another at the back.
- 10 Commercial-grade cabling:** Supports cabling runs for rooms of various sizes and layouts.

ENTERPRISE READY



Clean Installation

Flexible cabling lets you locate Tap near participants for convenient operation while installing the host computer in a cabinet, beneath a table, or behind a display.

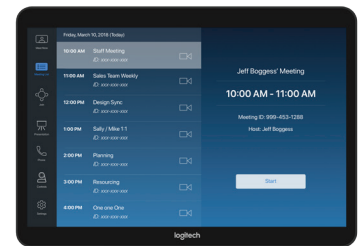
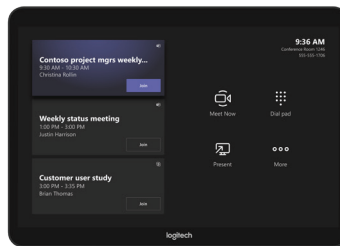
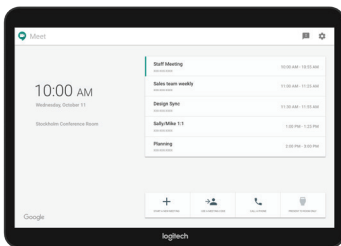


Optional Table, Riser, and Wall Mounts

Secure Tap flat to the table, raise the viewing angle, or mount it on the wall to conserve space, minimize cabling, and optimize the user experience.

ROOM SOLUTIONS WITH LOGITECH TAP

Pre-configured room solutions for Google Meet, Microsoft Teams, or Zoom Rooms include everything you need — Tap, a conference camera, and compute — to build out meetings rooms of virtually any size or shape.



Find Your Perfect Match

Tap works seamlessly with Logitech's full line of appliance and PC-based video bars and modular systems for small, medium, and large rooms.



Add Multi-Vendor Capability to Room Solutions

Logitech Swytch connects to laptops with a unified USB A + C connector, giving users an easy one-cable link to the room's display and conference camera for use with any video conferencing or webinar application.



Shown with Logitech Rally Bar.

PRODUCT DIMENSIONS	PORTS & INTERFACES	PACKAGE CONTENTS
<p>Device Total Height x Width x Depth: 58 x 244 x 179 mm 2.3 x 9.6 x 7.0 in 1.25 kg (2.75 lbs)</p> <p>Touchscreen 10.1" diagonal screen with 14° display angle Oleophobic and anti-glare coating 1280 x 800 resolution</p>	<p>USB 2.0/3.0/3.1 Type C (to PC) USB 2.0 Type A (for accessory connection) HDMI input (for content sharing) 3.5mm/1/8 " 4 pole Headset Jack Integrated ultrasonic speaker Integrated PIR Motion Sensor 100mm x 100mm VESA FDMI (Flat Display Mounting Interface) Kensington Lock Slots (2)</p>	<p>Logitech Tap with Cat5e Kit Tap Touch Controller Cat5e Kit Logitech Tap Receiver Dongle Transceiver 100-240v Power Supply with International Adaptor Set 2.97 m Cat5e Cable 7.0 m Cat5e Cable HDMI 1.4a cable 2.0 m Microfiber Cloth Documentation</p> <p>Logitech Tap with Strong USB Tap Touch Controller Logitech Strong USB 2.0/3.0/3.1 Cable 10m (32.8 ft) Type A (male) to Type C (male) Aramid-reinforced Plenum Rated Eca/IEC 60332-1-2 Compliant 3/4" Conduit friendly HDMI 1.4a cable 2.0m/6.5 ft Power adaptor with regional plugs (100-240v) 2.95m/9.67 ft VESA Mounting Screws (4) Microfiber Cloth Documentation</p>
SYSTEM REQUIREMENTS	COMPATIBILITY AND CERTIFICATIONS	
<p>Windows® 10 Chrome™ OS 80 and higher Logi CollabOS USB 2.0, 3.0, or 3.1 Type A port</p>	<p>Logitech Tap is certified as a touch controller for video conferencing room solutions:</p> <ul style="list-style-type: none"> Google Meet GoToRoom Microsoft Teams Rooms Pexip Room RingCentral Rooms Zoom Rooms <p>DisplayLink Plug and Display™: Tap connects via USB as an additional display for supported operating systems, including Windows 10 and Chrome OS</p>	
OPTIONAL ACCESSORIES		
<p>Table Mount Riser Mount Wall Mount Cat5e Kit (for Tap devices currently connected with Strong USB) Logitech Strong USB cable: 10 m, 25 m, 45 m (for Tap devices currently connected with Strong USB)</p>		
WARRANTY	PART NUMBERS	
<p>Standard: 2-year limited hardware warranty included Extended: Additional one-year extended warranty available at the time of hardware purchase. Contact your reseller for availability.</p>	<p>Logitech Tap with Cat5e Kit: 939-001950 Logitech Tap with Strong USB: 939-001796</p>	



www.logitech.com/Tap

Contact your reseller or contact us at

www.logitech.com/vcsales

Logitech Americas
7700 Gateway Blvd.
Newark, CA 94560 USA

Logitech Europe S.A.
EPFL - Quartier de l'Innovation
Daniel Borel Innovation Center
CH - 1015 Lausanne

Logitech Asia Pacific Ltd.
Tel : 852-2821-5900
Fax : 852-2520-2230

© 2021 Logitech. Logitech, the Logitech logo and other Logitech marks are owned by Logitech and may be registered. All other trademarks are the properties of their respective owners. Logitech assumes no responsibility for any errors that may appear in this publication. Product, pricing and feature information contained herein is subject to change without notice.

Published January 2021